



# LumiCloud

**The Next-Generation of Video Surveillance**

Revolutionize the way you monitor and manage your security solution.



## Key Features



### Dashboard Management

- Access cameras and other devices
- No port forwarding
- Connect anywhere, anytime, with any device\*



### Quickly Connect Devices

- Add a device manually or via QR Code
- Supports select camera and NVRs, LumiGuardian trailer, PoE Switches and access control



### Easy Configuration

- Remotely login and configure devices
- No server hardware to install, manage, or configure



### Optimize Your IT Costs

- No need to purchase an expensive server or hire maintenance staff
- Maximize time and resources while minimizing IT costs



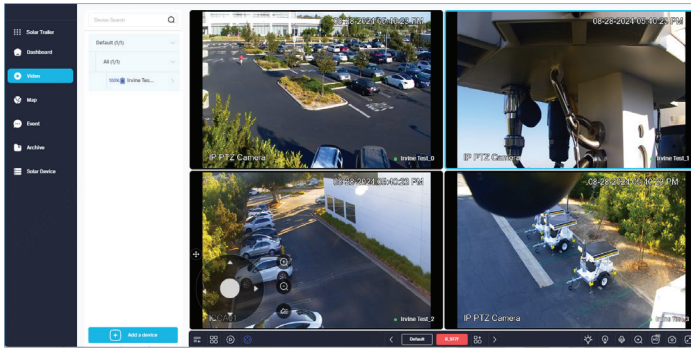
### Trusted

- Video data is stored and managed in the cloud
- Reliable protection against threats from both inside and outside

\* Device must support an HTML-5 web-browser.

**LumiCloud is a Video Surveillance as a Service (VSaaS) solution** powered by a variety of algorithms that provides the ability to search, receive alerts and analyze patterns of detections across locations and historical data. Data is centrally stored in the cloud with easy access from web browsers and smart phone apps.

LumiCloud supports high-resolution video streams, ensures clarity, and provides real-time access from anywhere. This platform provides advanced analytics, customizable alerts, effective bandwidth management, and simple subscription-based scalability.



*LumiCloud Video: View live video, search & playback video from a LumiGuardian solar-powered trailer. Increase a security presence with easy-access via a web browser or smart phone.*

### Experience seamless integration with\*

- Luminy's Network Cameras
- Luminy's NVRs
- Luminy's Network Switches
- Luminy's Access Control
- LumiGuardian Solar Trailer

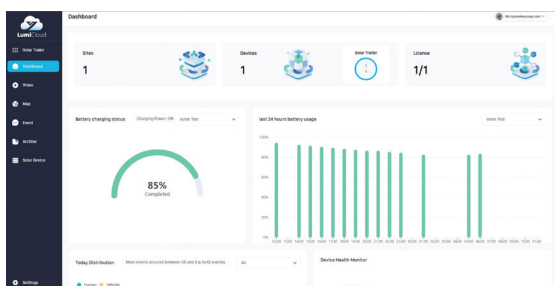
\* Select Models



# LumiCloud is a comprehensive monitoring and management platform for Luminys products, offering real-time visibility, security, storage, and system health information.

## Dashboard

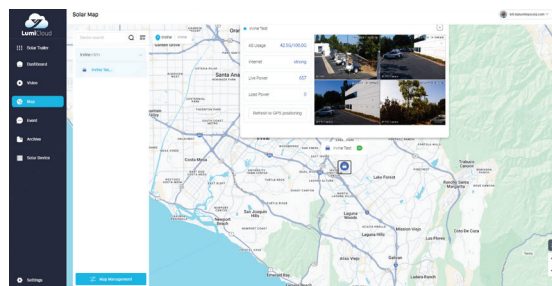
- Manage sites, devices, cameras, licenses in one ease-to-use interface.
- Connect anytime, from anywhere, using any device.
- No software to install, use a browser



*LumiCloud Dashboard: Track devices, cameras, users and data such as battery usage and other key metrics.*

## Mapping

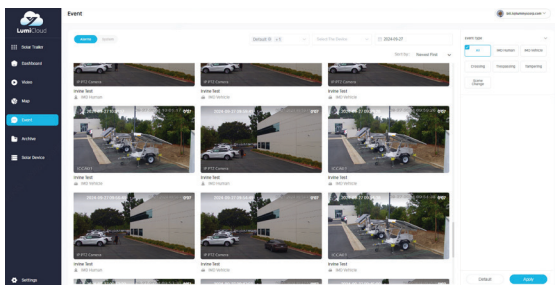
- 3D Mapping helps user to visualize locations of all connected devices
- Device locations use GPS data
- Zoom in track or view locations of devices



*LumiCloud Mapping: Track devices via GPS and visually locate via interactive 3D mapping.*

## Events

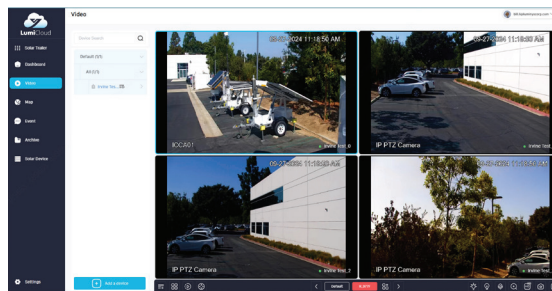
- Analytics simplify the searching of events to find what matters most
- View, download, share events based on search criteria: human, vehicle, line crossing, trespassing, tampering, scene change and more.
- Auto generate alarms and alerts for specific event types.



*LumiCloud Events: Enhance search criteria using analytics to find the events that matter most.*

## Live & Playback Video

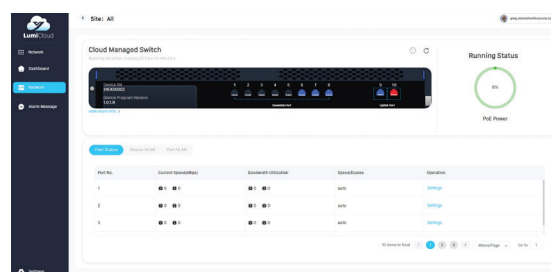
- View live or recorded video, pan/tilt/zoom, and search by time/date
- 2 Way Audio
- Lights On/Off







*Simplify network administration with real-time monitoring, configuration, and control directly through the LumiCloud platform.*

## Cloud Managed Switch

- PoE Watchdog automatically detect and reset unresponsive devices
- Long Distance PoE extends power delivery up to 820 feet
- Bandwidth Allocation controls bandwidth usage per port
- Real-time Network Health Monitoring



## LumiCloud Key Benefits

-  A **powerful** yet user-friendly web client interface allows convenient access and control from any device
-  Supports **cutting-edge AI analytics** and flexible storage options, both local and cloud-base
-  **Tools and features** that enable users to tailor workflows to their specific requirements
-  Packages that provide **scalability** with an infinite number of channels and storage capacity, catering to advanced tier requirements

## LumiCloud Supports Luminy's Access Control

Simplifying Access Control with LumiCloud

- **1 year subscription license**
- **Manages 1 door**
- **Supports Luminy's Web Access Controller**
- **Manage Credential & User Permissions**
- **Scalable and Flexible Deployment**

## LumiCloud with Luminy's Cloud Managed POE Switches

Simplifying Network Management with LumiCloud

- **Centralized Network Control:**
  - Remote Monitoring and Management
  - Simplified Configuration Processes
  - Real-Time Network Health Monitoring
- **Scalable and Flexible Deployment**
- **Remote Access with Secure Connectivity**

## LumiCloud Supports NVR, Cameras & Analytics



### NVR

- Luminy's NVR Models Supported
- Supports cameras connected & supported by Luminy's NVR
- PTZ control (for Luminy's cameras)
- 2 Way Audio



### Cameras

- Select Models Directly Supported
- PTZ control (for Luminy's cameras)
- 2 Way Audio

### Analytics

- iMD (Intelligent Motion Detection)
- Human Detection
- Vehicle Detection
- VCA (Video Content Analysis)
- Tripwire
- Trespassing



Discover the power of the LumiCloud eco-system, where cutting-edge cameras, NVRs, network switches, access control systems, and innovative solutions like LumiGuardian come together. By seamlessly connecting these devices, you gain secure data transmission and storage, empowering you with comprehensive control. Manage and monitor everything effortlessly from your browser or smartphone for an unparalleled sense of security and convenience.

## LumiCloud with LumiGuardian:

LumiCloud supports LumiGuardian by providing a remote monitoring and management platform for the various systems integrated into LumiGuardian, these include:



### Real-time Monitoring:

LumiGuardian is equipped with various environmental sensors and video cameras that transmit real-time data to the LumiCloud platform. Users can remotely monitor the trailer's location, solar energy levels, and security systems through LumiCloud's browser-based interface.



### Data and Reporting:

LumiCloud can generate reports on the performance and usage of the LumiGuardian, including energy production from solar panels, device uptime, and video of critical events. This data helps maintain the trailer and optimize its performance.



### System and Device Health Monitoring:

LumiCloud provides detailed insights into the performance of the LumiGuardian's systems, including the solar power generation, battery status, and device health. The health care feature allows dealers or operators to access a device monitoring dashboard, which helps ensure LumiGuardian is running smoothly by monitoring key performance indicators (KPIs).



### Event-based Video Recording: Stores only video

Triggered by specific events such as motion detection, alarms, or system alerts to save storage space and focus on critical incidents. The video is stored for up to 30 days for playback.

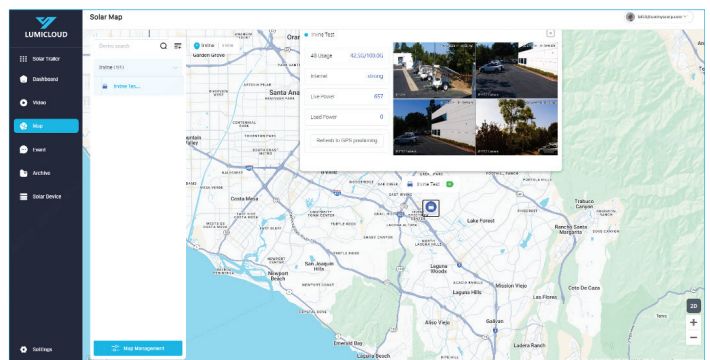


### Alerts and Notifications:

LumiCloud can send automatic alerts based on predefined conditions. For example, users can be notified if there are any power issues, unauthorized access, or security breaches around the LumiGuardian trailer.



*LumiGuardian stands ready to protect and alert you based on suspicious behavior. Use LumiCloud to communicate, view live video, and search and playback video events anytime.*



*Keep an eye on important assets and events with LumiCloud. Locate the current position of LumiGuardian via the integrated Google Maps location and view live video at anytime from any web browser.*

## Systems Diagram



The **LumiCloud Systems Diagram** illustrates a security dealer using the Partner Portal to *deliver device licenses* to the end-user. The end-user can provide the security dealer with access to devices for monitoring, remote maintenance and services. This is called entrusting service and supports all device platforms such as cameras, NVRs, Access Control, Transmission and specialty solutions like LumiGuardian.

Features	 LumiGuardian Solar Trailer	 Luminys NVRs	 Luminys Cameras (Select Models)	 Luminys Network Switches	 Luminys Access Control
Secure Remote Connection	✓	✓	✓	✓	✓
Add Device via QR Code	✓	✓	✓	✓	✓
User Roles	✓	✓	✓	✓	✓
Remote Monitoring/ Live Status	✓	✓	✓	✓	✓
Simplified Configuration Processes	✓	✓	✓	✓	✓
Comprehensive Reports	✓	✓	✓	✓	✓
Real-Time Network Health Monitoring	✓	✓	✓	✓	✓
Alerts & Notifications	✓	✓	✓	-	-
View Live & Recorded Video	✓	✓	✓	-	-
GPS Location & Mapping	✓	-	-	-	-
Monitor PoE Power	-	-	-	✓	-
Credentials & Rules	-	-	-	-	✓
Door Management	-	-	-	-	✓



## MVP Program for Luminys Authorized Dealers

Join the Luminys MVP program to automate the LumiCloud License management process. After purchasing any LumiCloud licenses, they will show up in your LumiCloud account where you can assign them to end-users and devices.

LumiCloud licenses require registration to the Luminys MVP program.

Register now at <https://mvpprogram.luminyscorp.com/>



### User Interface

#### Web Client

Google Chrome, Safari, Fire Fox, Microsoft Edge

#### Mobile Application

iOS

Android OS

## LumiCloud HD Video License

LumiCloud HD Video Unity is a one-year license that supports one Luminys camera or NVR channel with high-performance video surveillance solution utilizing AI-based events, 30-day rolling AI event cloud storage, remote maintenance, real-time device health monitoring, and comprehensive support for enhanced security monitoring. Archive important video events indefinitely in the cloud (requires active license and provides for up to 30 GB Archive storage per camera).

## LumiCloud Solar Trailer License

The LumiCloud Solar Trailer is a one-year license for one portable solar-powered surveillance solution designed for outdoor security monitoring, supporting up to four surveillance channels. This license provides LumiCloud application support and video storage for up to 30 days.

## LumiCloud Data Packages for the LumiGuardian Solar Trailer

LumiCloud Data Packages offer 10GB, 100GB, and 200GB options for customers in USA and Canada. They include high-speed 4G connectivity, supporting AT&T, Verizon, and T-Mobile in the USA, and Rogers, Bell, and Telus in Canada. Data subscription plans are offered as monthly, 6-month and 12-month.

## LumiCloud Network Switch License

The LumiCloud Network Switch is a one-year license that activates Luminys' high-performance network switches, which are designed for network data exchange, monitoring data transmission, and network switch status monitoring. It supports the management of up to 100 devices including PoE management.

## LumiCloud Access Control Door License

LumiCloud Access Control Door License provides one-year support and connectivity to activate and manage one door within the cloud-based access control system. This enables administrators to configure user permissions, set up user and door groups, and maintain detailed access records specifically for that door, ensuring secure and efficient access control on a per-door basis. This license is compatible with Luminys Web Access Controllers.

# Luminys Systems Corporation

**Luminys Systems Corporation** leads the way in helping businesses build smart, sustainable, and secure ecosystems with integrity. Connected solutions and services offer safety, insight, intelligence, and operational efficiency.

With a focus on ingenuity and exceptional customer support, Luminys delivers future-ready products that adapt to the evolving needs of various industries. As a U.S.-based subsidiary of Foxlink, a global leader in electronics manufacturing, Luminys is trusted by customers and partners worldwide to deliver advanced technology solutions and services shaping a sustainable, smarter future.

## Contact

Tel: (949) 679-7777

Address: 15245 Alton Pkwy, Irvine, CA 92618

Email: [sales@luminyscorp.com](mailto:sales@luminyscorp.com)

Website: <https://www.luminyscorp.com/>



Scan the QR code to join our Luminys MVP Program and unlock exclusive benefits, including special pricing, extended warranties, and priority support. Don't miss out on enhancing your business with our premium solutions!