



Luminys Systems Corp.

Fall 2024 Product Line

Luminys Systems Corporation



Rigorous Compliance



Delivering Safe, Smart, and Sustainable Ecosystems



Mission:

To empower communities and customers with advanced, high-quality technology solutions, we uphold integrity, enhance security, and optimize operations. Our smart connected solutions deliver sustainable, safer, and symbiotic ecosystems.



Vision:

To be the connected ecosystem of solutions and services for a sustainable, secure world.

MVP Program

As an MVP partner, you are not just part of our network – you are at the heart of our mission to innovate, lead, and shape the future of our industry together.

Join us, and gain access to dynamic co-marketing initiatives, cutting-edge technical support, priority resources, and significant pricing advantages.

What Can We Do For You

- By becoming an MVP partner, you unlock a pathway to growth through exclusive benefits, robust support, and unique opportunities that drive profitability.
- Our program is structured with four distinct tiers, each offering increasing advantages tailored to your achievements and commitment.
- Whether you're just starting your journey or aiming to elevate your business to the highest level, the MVP Program provides everything you need to succeed.



Partner





Executive



Ambassador



Elite

Core Requirements	Partner	Executive	Ambassador	Elite
Sales (Annually)/Sales volume objectives	\$10K and Up	\$60K and Up	\$120K and Up	\$250k
*Certification/Certification training objectives	None	None	1 Sales Certification & 1 Technical Certification	2 Sales Certification & 2 Technical Certification
Core Benefits	Partner	Executive	Ambassador	Elite
Pricing Benefits/MSRP Discounts	Up To 44% Off MSRP	Up To 48% Off MSRP	Up To 52% Off MSRP	Up To 54% Off MSRP
Extended Warranty	7	8	9	10
Over the Counter Exchange	✓	✓	✓	✓
Project Registration	✓	✓	✓	✓
Co-Marketing		✓	✓	✓
Online Certification Courses	✓	✓	✓	✓
Dealer Portal	✓	✓	✓	✓
Dedicated Account Manager	✓	✓	✓	✓
Tech Support/Dedicated Project Technical Support		Dedicated Project Technical Support	Dedicated Project Technical Support	Dedicated Project Technical Support
Tech Support/Email Response	Email Response within 24 hours	Email Response within 24 hours	Email Response within 12 hours	Email Response within 12 hours
Tech Support Line	General Line	General Line	Priority Line	Priority Line
Partner Care Program		✓	✓	✓
Lead Generation		✓	✓	✓
Technical Consultant		✓	✓	✓
MVP Summit			Eligible 2ppl	Eligible 2ppl
Lumi Cloud Access	✓	✓	✓	✓
Exclusive Nomination Opportunity			 Dealer Advisory Nomination	 Dealer Advisory Nomination

*This requirement will be mandatory in the future once the certification training program is launched.

Our Technologies



LumiLuxSmart

LumiLuxSmart technology allows cameras to capture clear, full-color video day or night. When motion is detected, LumiLuxSmart cameras switch from IR LEDs to white-light LEDs to illuminate a scene, then switch back to IR mode once motion has ceased to prevent light pollution and energy inefficiency.



LumiSearch

LumiSearch technology lets you quickly find, track, and identify targets in security footage using a reference image. The LumiSearch algorithm analyzes human body shape, clothing color, and other characteristics to accurately pinpoint where a target has appeared in footage captured by any LumiSearch-enabled camera and NVR.



LumiAnalytics

LumiAnalytics technology uses detailed metadata and advanced AI algorithms to track important metrics such as people counting and behavior analysis. These insights give businesses highly valuable information to improve and optimize operations.



LumiColor

LumiColor technology allows you to capture color footage in complete darkness (0 lux). Cameras with this technology have integrated white-light LEDs to illuminate scenes in low lighting. The integrated white lights work in combination with a large aperture lens to capture more available light and reproduce color images with superior detail and contrast.



LumiTracking

LumiTracking technology enhances security and efficiency by automating tracking of people and vehicles. It uses advanced AI algorithms to monitor and predict the direction and speed of moving targets, enabling quick response to potential issues for enhanced security and smooth operation.



LumiPower

LumiPower technology enables long-distance Power over Ethernet transmission, extending power and data delivery up to 3,000 feet. This simplifies installations in larger or more complex environments by eliminating the need for additional power sources or repeaters. LumiPower ensures consistent connectivity and dependable power management, ideal for expansive security infrastructures.



LumiPoE

LumiPoE technology provides PoE+ power delivery across designated ports, with select models supporting PoE++ up to 90W on specific ports for high-demand devices like PTZ cameras. Key features include PoE Watchdog for automatic device resets, Long Distance PoE to extend power and data transmission up to 820 feet, PoE Priority Management, and Perpetual PoE to ensure uninterrupted power during reboots.



LumiIR

LumiIR technology provides superior light sensitivity to capture clear footage in the darkest conditions. Cameras with LumiIR are sensitive to 940 nm for unobtrusive, covert security without sacrificing footage quality.



LumiDeterrent

LumiDeterrent technology integrates full-color video, active deterrence, and AI algorithms to provide 24/7 security. This technology can accurately identify potential risks and prevent incidents with red and blue light alarms and enhanced sound alarms.



LumiLightBand

LumiLightBand technology activates a camera's light strip by schedule or when an event alarm is triggered. The lights come in different colors and can be set to keep steady, wave, or flash for a specific amount of time.

Network Fixed Cameras

Luminys offers a comprehensive range of network cameras to meet the demands of various applications. The entry-level Two (2) and Three (3) Series provide high-quality performance with just enough features to get the job done. The mainstream Five (5) Series, on the other hand, boasts a suite of advanced LumiTechnologies, including LumiLuxSmart, LumiColor, and LumiDeterrent. The N5-L and N5-D models in this series address the common issue of poor lighting in complete darkness. The LumiLuxSmart Technology activates the energy-efficient white-light LEDs only when motion is detected, turning them off when

motion stops and switching to the integrated infrared LEDs instead, thereby reducing light pollution. The N5-D Series takes surveillance a step further, with red and blue flashing lights and a siren to act as a preventive measure. Additionally, the N5-C Series leverages LumiColor Technology to deliver vivid, full-color images even in complete darkness. At the top end, the Nine (9) Series encompasses specialty network cameras designed to meet the demands of professional-grade surveillance applications.

N5-L 4MP LumiLuxSmart Series



N5B-4LA2

- 4MP Bullet
- 2.8mm Lens
- LumiLuxSmart with IR and White-light LEDs
- LumiSearch, LumiAnalytics, LumiPower, iMD
- Video Content Analytics+: Line Crossing, Intrusion, Parking Detection, Loitering Detection



N5D-4LA2

- 4MP Dome
- 2.8mm Lens
- LumiLuxSmart with IR and White-light LEDs
- LumiSearch, LumiAnalytics, LumiPower, iMD
- Video Content Analytics+: Line Crossing, Intrusion, Parking Detection, Loitering Detection



N5T-4LA2

- 4MP Turret
- 2.8mm Lens
- LumiLuxSmart with IR and White-light LEDs
- LumiSearch, LumiAnalytics, LumiPower, iMD
- Video Content Analytics+: Line Crossing, Intrusion, Parking Detection, Loitering Detection



N5B-4LAV

- 4MP Bullet
- 2.7-12mm Vari-focal Lens
- LumiLuxSmart With IR and White-light LEDs
- LumiSearch, LumiAnalytics, LumiPower, iMD
- Video Content Analytics+: Line Crossing, Intrusion, Parking Detection, Loitering Detection



N5D-4LAV

- 4MP Dome
- 2.7-12mm Vari-focal Lens
- LumiLuxSmart with IR and White-light LEDs
- LumiSearch, LumiAnalytics, LumiPower, iMD
- Video Content Analytics+: Line Crossing, Intrusion, Parking Detection, Loitering Detection



N5T-4LAV

- 4MP Turret
- 2.7-12mm Vari-focal Lens
- LumiLuxSmart with IR and White-light LEDs
- LumiSearch, LumiAnalytics, LumiPower, iMD
- Video Content Analytics+: Line Crossing, Intrusion, Parking Detection, Loitering Detection

N5-L 8MP LumiLuxSmart Series



N5B-8LA2

- 8MP Bullet
- 2.8mm Lens
- LumiLuxSmart With IR and White-light LEDs
- LumiSearch, LumiAnalytics, LumiPower, iMD
- Video Content Analytics+: Line Crossing, Intrusion, Parking Detection, Loitering Detection



N5D-8LA2

- 8MP Dome
- 2.8mm Lens
- LumiLuxSmart With IR and White-light LEDs
- LumiSearch, LumiAnalytics, LumiPower, iMD
- Video Content Analytics+: Line Crossing, Intrusion, Parking Detection, Loitering Detection



N5T-8LA2 / N5T-8LA2B

- 8MP Turret (Black Optional)
- 2.8mm Lens
- LumiLuxSmart With IR and White-light LEDs
- LumiSearch, LumiAnalytics, LumiPower, iMD
- Video Content Analytics+: Line Crossing, Intrusion, Parking Detection, Loitering Detection

N5-L 8MP LumiLuxSmart Series



N5B-8LAV

- 8MP Bullet
- 2.7-12mm Vari-focal Lens
- LumiLuxSmart With IR and White-light LEDs
- LumiSearch, LumiAnalytics, LumiPower, iMD
- Video Content Analytics+: Line Crossing, Intrusion, Parking Detection, Loitering Detection



N5D-8LAV

- 8MP Dome
- 2.7-12mm Vari-focal Lens
- LumiLuxSmart With IR and White-light LEDs
- LumiSearch, LumiAnalytics, LumiPower, iMD
- Video Content Analytics+: Line Crossing, Intrusion, Parking Detection, Loitering Detection



N5T-8LAV

- 8MP Turret
- 2.7-12mm Vari-focal Lens
- LumiLuxSmart With IR and White-light LEDs
- LumiSearch, LumiAnalytics, LumiPower, iMD Video Content Analytics+: Line Crossing, Intrusion, Parking Detection, Loitering Detection

N5-L 12MP LumiLuxSmart Series



N5B-12LA2

- 12MP Bullet
- 2.8mm Lens
- LumiLuxSmart With IR and White-light LEDs
- LumiSearch, LumiAnalytics, LumiPower, iMD
- Video Content Analytics+: Line Crossing, Intrusion, Parking Detection, Loitering Detection



N5D-12LA2

- 12MP Dome
- 2.8mm Lens
- LumiLuxSmart With IR and White-light LEDs
- LumiSearch, LumiAnalytics, LumiPower, iMD
- Video Content Analytics+: Line Crossing, Intrusion, Parking Detection, Loitering Detection



N5T-12LA2

- 12MP Turret
- 2.8mm Lens
- LumiLuxSmart With IR and White-light LEDs
- LumiSearch, LumiAnalytics, LumiPower, iMD
- Video Content Analytics+: Line Crossing, Intrusion, Parking Detection, Loitering Detection

N5-D 4MP LumiDeterrent Camera



N5T-4DA2

- 4MP Turret
- 2.8mm Lens
- LumiDeterrent With Red / Blue Lights
- LumiLuxSmart With IR and White-light LEDs
- LumiSearch
- Video Content Analytics

N5-D 8MP LumiDeterrent Series



N5T-8DA2

- 8MP Turret
- 2.8mm Lens
- LumiDeterrent With Red / Blue Lights
- LumiLuxSmart With IR and White-light LEDs
- LumiSearch
- Video Content Analytics



N5T-8DAV

- 8MP Turret
- 2.7-13.5mm Vari-focal Lens
- LumiDeterrent With Red / Blue Lights
- LumiLuxSmart With IR and White-light LEDs
- LumiSearch
- Video Content Analytics

N5-C 4MP LumiColor Series



N5B-4CA2

- 4MP Bullet
- 2.8mm Lens
- LumiColor With White-light LEDs
- LumiSearch, LumiAnalytics, LumiPower
- Video Content Analytics+: Line Crossing, Intrusion, Parking Detection, Loitering Detection



N5T-4CA2

- 4MP Turret
- 2.8mm Lens
- LumiColor With White-light LEDs
- LumiSearch, LumiAnalytics, LumiPower
- Video Content Analytics+: Line Crossing, Intrusion, Parking Detection, Loitering Detection

N5P-D 2x4MP LumiDeterrent Series



N5P-8DA2

- 2x4MP Turret
- 2.8mm Lens
- 180° Stitched Multi-sensor
- LumiDeterrent With Red / Blue Lights
- LumiLuxSmart With IR and White-light LEDs
- LumiTracking
- Video Content Analytics

N5-C 8MP LumiColor Series



N5B-8CA2

- 8MP Bullet
- 2.8mm Lens
- LumiColor With White-light LEDs
- LumiSearch, LumiAnalytics, LumiPower
- Video Content Analytics+: Line Crossing, Intrusion, Parking Detection, Loitering Detection



N5T-8CA2

- 8MP Turret
- 2.8mm Lens
- LumiColor With White-light LEDs
- LumiSearch, LumiAnalytics, LumiPower
- Video Content Analytics+: Line Crossing, Intrusion, Parking Detection, Loitering Detection

N3-B LumiLightBand Camera



N3T-8BA2

- 8MP Turret
- 2.8mm Lens
- LumiLightBand
- LumiLuxSmart With IR and White-light LEDs
- iMD, Video Content Analytics

Network Specialty Cameras

Luminys specialty security devices are designed to improve operations and go beyond today's highest security standards. Whatever your needs, our comprehensive line offers a solution to fit your requirements.

From the durable, high-quality LumiGuardian Solar Security Trailer to the N9 Series of discreet Fisheye cameras for increased situational awareness and License Plate Recognition camera for tackling roadway violence and organized crime, we have you covered.

N9 8MP Fisheye Camera



N9F-8RA1

- 8MP, IR Dome
- 1.85mm Lens
- 360° Stitched Single-sensor
- People Counting, Queue Management
- Video Content Analytics

N9 12MP Fisheye Camera



N9F-12RA1

- 12MP, IR Dome
- 1.85mm Lens
- 360° Stitched Single-sensor
- People Counting, Queue Management
- Video Content Analytics

N9 LPR 4MP Camera



N9L-4RAL

- 4MP, IR Bullet
- 10-50mm Vari-focal Lens
- ANPR
- 99% Accuracy
- LumiAnalytics



LumiGuardian Solar Security Trailer

TG-113A

- Autonomous Power for 7 to 10 Days Without Sun
- 11.2kWh Lithium Iron Phosphate Batteries
- Lockable and Secure Design
- C5-I Corrosion Protection
- 4G LTE Communication with Built-In eSIM Card
- One-Person Assembly

**Cameras Sold Separate*

IP Speaker



S-1515A

- Power Consumption 15w
- Max Sound Pressure Level: 108db, Snr \geq 75db
- Built-In Microphone
- Maximum Connection Distance Up To 100 Meters (328ft)
- Aviation Aluminum Material

PTZ cameras provide the foundation for security solutions that safeguard perimeters, enhance building safety, and gather data to support informed decision-making. The Luminys line of high-performing PTZ cameras offers various housing, resolution, and optical zoom options to fit a wide range of applications, from casinos to retail and commercial environments.

With superb image quality and a comprehensive feature set, the P4 and P5 Series enhance security and efficiency by accurately detecting and tracking people or objects. By streaming metadata, operators can make data-driven decisions that improve overall safety.

P4 4MP LumiIR PTZ Camera



P44-49A25

- 4MP, LumiIR 940nm
- 25x Optical Zoom
- LumiTracking, iMD
- Video Content Analytics+: Line Crossing, Intrusion, Parking Detection, Loitering Detection

P4 8MP IR PTZ Camera



P45-8RA25

- 8MP, IR
- 25x Optical Zoom
- LumiTracking, Face Detection, People Counting
- Video Content Analytics+: Line Crossing, Intrusion, Parking Detection, Loitering Detection

P5-S 4MP LumiSearch PTZ Series



P54-4SA25

- 4MP
- 25x IR Optical Zoom
- LumiSearch, LumiTracking, LumiAnalytics Face Detection, People Counting
- Video Content Analytics+: Line Crossing, Intrusion, Parking Detection, Loitering Detection



P55-4SA45

- 4MP
- 45x IR Optical Zoom
- LumiSearch, LumiTracking, LumiAnalytics Face Detection, People Counting
- Video Content Analytics+: Line Crossing, Intrusion, Parking Detection, Loitering Detection



P5C-4SA32

- 4MP
- 32x Optical Zoom
- LumiSearch, LumiTracking, LumiAnalytics Face Detection, People Counting
- Video Content Analytics+: Line Crossing, Intrusion, Parking Detection, Loitering Detection

NVR





For companies of all sizes, Luminy provides an extensive selection of network video recorders (NVRs). The R3 4K PoE NVR Series provides dependable 4K recording with plug-and-play (PoE) capability and supports camera-based analytics, utilizing the smart features of Luminy cameras. For more advanced applications, the R5 Series introduces AI-enabled features with up to 8K resolution and supports channel counts ranging from 8 to 32.

The R5 Series also integrates with LumiAnalytics and LumiSearch, delivering AI-driven insights and fast, intelligent video search across connected devices. Whether you choose the R3 for straightforward deployments or the AI-powered R5 for more sophisticated applications, Luminy NVRs offer scalable, high-performance solutions for any business.

R3 4K PoE NVR Series

			
R31-4PA <ul style="list-style-type: none">• 4K NVR• 4CH With 1 SATA• HDMI / VGA Output• PoE Plug-and-Play• Analytics by Camera	R31-8PA <ul style="list-style-type: none">• 4K NVR• 8CH With 1 SATA• HDMI / VGA Output• PoE Plug-and-Play• Analytics by Camera	R32-8PA <ul style="list-style-type: none">• 4K NVR• 8CH With 2 SATA• HDMI / VGA Output• PoE Plug-and-Play• Analytics by Camera	R32-16PA <ul style="list-style-type: none">• 4K NVR• 16CH With 2 SATA• HDMI / VGA Output• PoE Plug-and-Play• Analytics by Camera

R5 8K LumiSearch NVR Series

			
R52-8PA <ul style="list-style-type: none">• 8K NVR• 8CH With 2 SATA• 8 PoE Ports Support LumiPower• iMD, Face Recognition and VCA by Recorder• LumiSearch Supported	R52-16PA <ul style="list-style-type: none">• 8K NVR• 16CH With 2 SATA• 16 PoE Ports, Port 1-8 Support LumiPower• iMD, Face Recognition and VCA by Recorder• LumiSearch Supported	R54-32PA <ul style="list-style-type: none">• 8K NVR• 32CH With 4 SATA and 1 eSATA• 24 PoE Ports, Port 1-8 Support LumiPower• iMD, Face Recognition and VCA by Recorder• LumiSearch Supported	R54-32NA <ul style="list-style-type: none">• 8K NVR• 32CH With 4 SATA and 1 eSATA• Dual NIC• iMD, Face Recognition and VCA by Recorder• LumiSearch Supported

Luminys offers a diverse range of Cloud-Managed Gigabit switches that are engineered to meet the needs of modern security and smart building infrastructures. These switches use LumiPoE™ technology to provide intelligent power management, seamless data transmission, and complete integration with the LumiCloud platform.

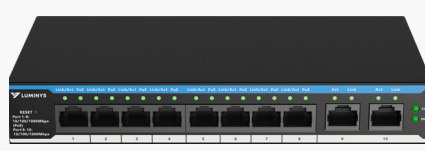
LumiCloud allows users to manage their entire network of cameras, access control systems, and other Luminys devices from anywhere in the world, resulting in more efficient operations and real-time monitoring. Whether for small or large businesses, these switches provide robust, scalable solutions for consistent performance and flexible deployment across any network.

Cloud Managed Gigabit PoE Switch Series



SML-6GPA

- 4 PoE Ports (PoE+ 802.3at)
- 2 RJ45 Uplink Ports
- 12 Gbps Switching Capacity
- 60W PoE Budget
- Layer 2 Support
- Cloud Management via LumiCloud (TBA)



SML-10GPA

- 8 PoE Ports (PoE+ 802.3at), with Port 1 supporting PoE++ (802.3bt, 90W)
- 2 RJ45 Uplink Ports
- 20 Gbps Switching Capacity
- 110W PoE Budget
- Layer 2 Support
- Cloud Management via LumiCloud (TBA)



SML-20GPA

- 16 PoE Ports (PoE+ 802.3at), with Port 1 and 2 supporting PoE++ (802.3bt, 90W)
- 2 RJ45 Uplink Ports, 2 SFP Uplink Ports
- 40 Gbps Switching Capacity
- 240W PoE Budget
- Layer 2 Support
- Cloud Management via LumiCloud (TBA)



SML-28GPA

- 24 PoE Ports (PoE+ 802.3at), with Port 1 and 2 supporting PoE++ (802.3bt, 90W)
- 2 RJ45 Uplink Ports, 2 SFP Uplink Ports
- 56 Gbps Switching Capacity
- 375W PoE Budget
- Layer 2 Support
- Cloud Management via LumiCloud (TBA)

Access Control

Luminys delivers a variety of access control solutions that are built for flexibility and scalability. The 2-Door Web Access Controller is at the heart of the system, allowing for centralized management of access points. Multiple controllers can be stacked for larger deployments.

Compact mullion-mount readers save space while maintaining performance, whereas Bluetooth Access Readers enable mobile-based, contactless entry, eliminating the need for physical access cards. Built to withstand harsh environments, Luminys access control products ensure reliable, secure access for businesses of all sizes.

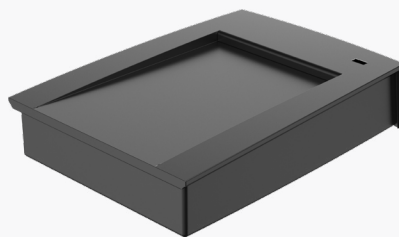
2-Door Web Access Controller



C-2PA

- 2-Door Access Controller
- 12 VDC or PoE (802.3at)
- Remote Control
- Web Service
- Ease of Operation

Card Enrollment Reader



R-ECA

- Read and Issue Mifare (IC) Cards
- USB 2.0 Port
- Plug-and-Play
- Indicator Light

Vandal-Proof Keypad Reader



R-MPA

- All-Metal Keypad with Indicator Light and Buzzer
- Supporting Mifare (IC) Cards Reading and Password Unlocking Method
- IK08 Protection
- RS-485 and Wiegand Communication Protocols

Bluetooth Access Reader



R-NCA

- Mullion Mount Housing with Indicator Light and Buzzer
- Bluetooth Reading and Mifare (IC) Card Reading
- RS-485/ Wiegand/ Bluetooth Communication Protocols
- IP66 Protection For Indoor and Outdoor Use

Mullion Keypad Access Reader



R-NTA

- Mullion Mount Housing with Indicator Light and Buzzer
- RS-485 / Wiegand Communication Protocols
- IP66 Protection For Indoor and Outdoor Use

Waterproof Access Reader

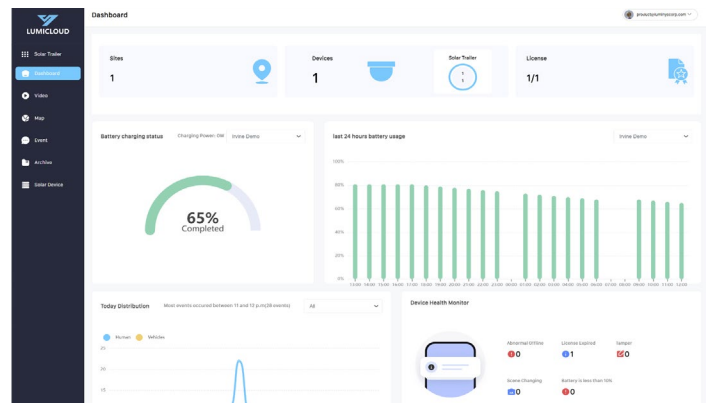


R-WCA

- Read and Issue Mifare (IC) Cards
- Buzzer and Indicator Light
- RS-485 and Wiegand Communication Protocols
- IP66 Protection For Indoor and Outdoor Use

LumiCloud is a Video Surveillance as a Service (VSaaS) solution powered by a variety of enterprise-grade algorithms that provides the ability to search, receive alerts and analyze patterns of detections across locations and historical data. Data is centrally stored in the cloud with easy access from web browsers and smart phone apps.

LumiCloud supports high-resolution video streams, ensures clarity, and provides real-time access from anywhere. This platform provides advanced analytics, customizable alerts, effective bandwidth management, and simple subscription-based scalability.



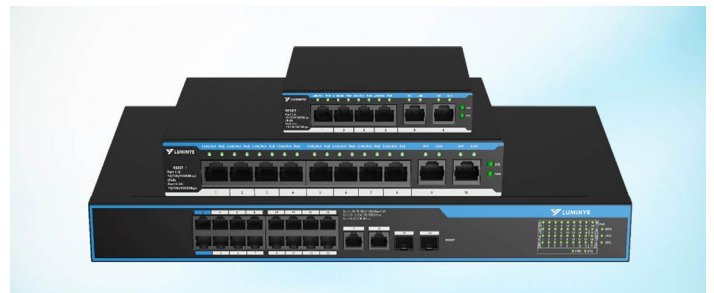
LumiCloud Solar Trailer License



LCL-ST4

- Supports LumiGuardian Solar Trailer
- One year license
- Supports up to four Video channels
- Provides LumiCloud application support
- Video storage for up to 30 days

LumiCloud Switch 100 Channel License



LCL-SW100

- Supports Luminy Managed Network Switches
- One year license
- Monitor data transmission & status
- Supports up to 100 Switch Device channels
- Provides LumiCloud application support

LumiCloud Data Packages for the LumiGuardian Solar Trailer



- LCL-DATA10GU** LumiCloud 4G Data 10GB USA
- LCL-DATA100GU** LumiCloud 4G Data 100GB USA
- LCL-DATA200GU** LumiCloud 4G Data 200GB USA
- LCL-DATA10GC** LumiCloud 4G Data 10GB Canada
- LCL-DATA100GC** LumiCloud 4G Data 100GB Canada
- LCL-DATA200GC** LumiCloud 4G Data 200GB Canada

- Data packages of 10GB, 100GB and 200GB for USA and Canada
- Enterprise-grade data package one Calendar month validity period
- Supports AT&T, Verizon and T-Mobile cellular networks in USA
- Supports Rogers, Bell and Telus cellular networks in Canada

LumiCenter

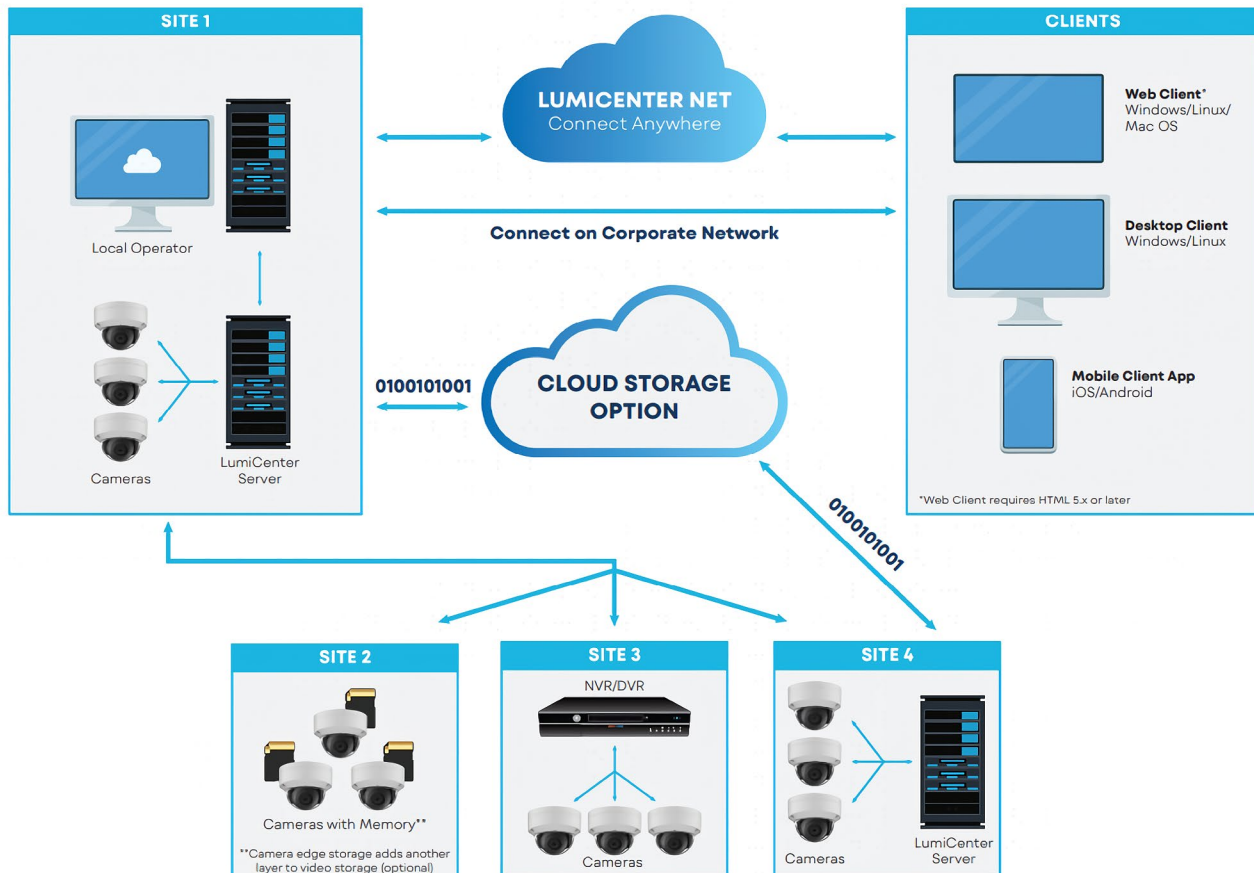
LumiCenter is a state-of-the-art video management software (VMS) designed to seamlessly integrate surveillance cameras, AI-based analytics, and robust server software with web clients and mobile applications.

With highly customizable features and flexible scaling, LumiCenter eliminates the common frustrations of most video management systems and provides a streamlined, intelligent solution to video monitoring and management.



LumiCenter System Diagram

LumiCenter is designed to be an all-in-one integration and management hub for your surveillance and access control devices. It allows you to store data at the edge, locally, or in a centralized server. Access your systems and information no matter where you are or what device you are on with LumiCenter Net and our various clients.





LumiCenter VMS supports ONVIF profiles G, M, S and T for maximum IP camera and device compatibility. There are three variants of LumiCenter: Basic, Plus and Max. The software license has no annual maintenance fee.

Choose the LumiCenter version that fits your needs.

Features	LumiCenter Basic <i>LCE-BASV</i>	LumiCenter Plus <i>LCE-PLSV</i>	LumiCenter Max <i>LCE-MAXV</i>
Maximum Number of Distributed Servers	30	30	Unlimited
Maximum Number of Cameras	Unlimited	Unlimited	Unlimited
Real-Time Analytics (Object Tracker)	√	√	√
Edge Analytics (Camera Metadata)	√	√	√
Edge Storage (Playback Only)	√	√	√
AutoStream™ Adaptive Bandwidth Management	√	√	√
Interactive 3D Map	√	√	√
Web Clients and Smart Phone Applications	√	√	√
Timeslice Search (Search by Time Intervals)	√	√	√
Macros (Event-Response Scenarios)	√	√	√
ONVIF Profiles G, S, T, M	√	√	√
Video Bookmarking (Searchable Text Comments)	√	√	√
PanoMerge™	√	√	√
LumiCenter Net (Cloud Service)	-	√	√
Reports	-	√	√
Cross-System Client	-	√	√
Storage Replication	-	√	√
Failover	-	-	√
Video Wall	-	-	√
LDAP Service	-	-	√

Add more power to your system with LumiCenter add-ons*.

LumiCenter Addons*			
Access Control** <i>LCE-AC</i>	√	√	√
Face Recognition <i>LCE-FR</i>	-	√	√
LPR Search <i>LCE-LPRS</i>	-	√	√
LPR <i>LCE-LPR</i>	-	√	√
LumiSearch™ <i>LCE-LUMIS</i>	-	√	√

*Add-ons require a LumiCenter video license.
**Access control add-on sold per reader.

Luminys Systems Corporation

Luminys Systems Corporation leads the way in helping businesses build smart, sustainable, and secure ecosystems with integrity. Connected solutions and services offer safety, insight, intelligence, and operational efficiency.

With a focus on ingenuity and exceptional customer support, Luminys delivers future-ready products that adapt to the evolving needs of various industries. As a U.S.-based subsidiary of Foxlink, a global leader in electronics manufacturing, Luminys is trusted by customers and partners worldwide to deliver advanced technology solutions and services shaping a sustainable, smarter future.

Contact

Tel: (949) 679-7777

Address: 15245 Alton Pkwy, Irvine, CA 92618

Email: sales@luminyscorp.com

Website: <https://www.luminyscorp.com/>



Scan the QR code to join our Luminys MVP Program and unlock exclusive benefits, including special pricing, extended warranties, and priority support. Don't miss out on enhancing your business with our premium solutions!