



# LumiCenter VMS

Unifying Security, Amplifying Intelligence



## Unified Control Interface:

Seamless integration and management of multiple devices from one interface.



## Advanced Analytics:

On-board camera analytics and AI-based analytics detection.



## Real-Time Monitoring:

Timely alerts with automated event responses.

# LumiCenter Overview

LumiCenter is a state-of-the-art video management software (VMS) designed to seamlessly integrate surveillance cameras, AI-based analytics, and robust server software with web clients and mobile applications. The software enables you to take a proactive stance on security, predicting and alerting to potential incidents before they escalate. Dynamic map navigation and response systems let you quickly access video feed and automate responses. LumiCenter eliminates the common frustrations of most video management systems and provides a streamlined, intelligent solution to video monitoring and management.

## AI-Powered Analytics

### Behavior Analytics: Man Down Detected

- ▶ Recognizes and alerts on potential risks by detecting specific human postures such as a person lying down, raising their arms, or crouching by an object.



### LumiSearch: Tag and Track People or Objects

- ▶ AI analytics extracts human appearance features and stores them in a database.
- ▶ Select a person in a video frame or upload a photo to quickly find similar individuals within security footage from multiple cameras.

### Real-time Analytics: Advanced Motion Detection

- ▶ Supports embedded camera analytics for important scene metadata and information.
- ▶ Supports ONVIF profiles M and T.
- ▶ Reduces false events and alerts with state-of-the-art algorithms.



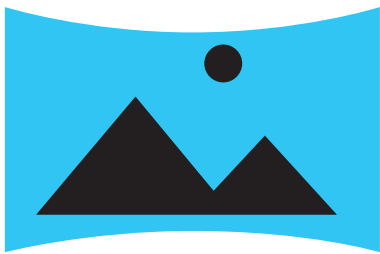


## Web, Desktop, and Mobile Clients

- ▶ Access Lumicenter from any device.
- ▶ Easily change video viewing and analytic settings and monitor video feeds from anywhere.

## PanoMerge™

- ▶ Seamlessly combine feeds from up to three (3) cameras to create a panoramic view.
- ▶ Watch merged footage live or on playback
- ▶ Export panoramic footage as standard .avi or .mkv files.
- ▶ Select and zoom into any part of the merged image.

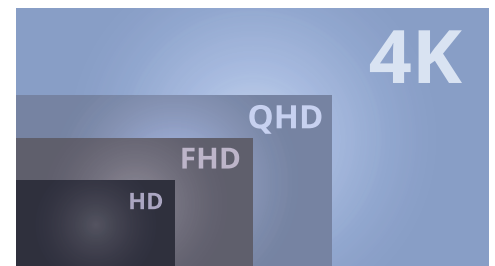


## Image Dewarping

- ▶ Dewarp and correct images without any additional burden on the client CPU.

## AutoStream™

- ▶ Automatically chooses a camera stream that matches the client's screen resolution.
- ▶ Saves network bandwidth and client CPU resources using adaptive video streaming.

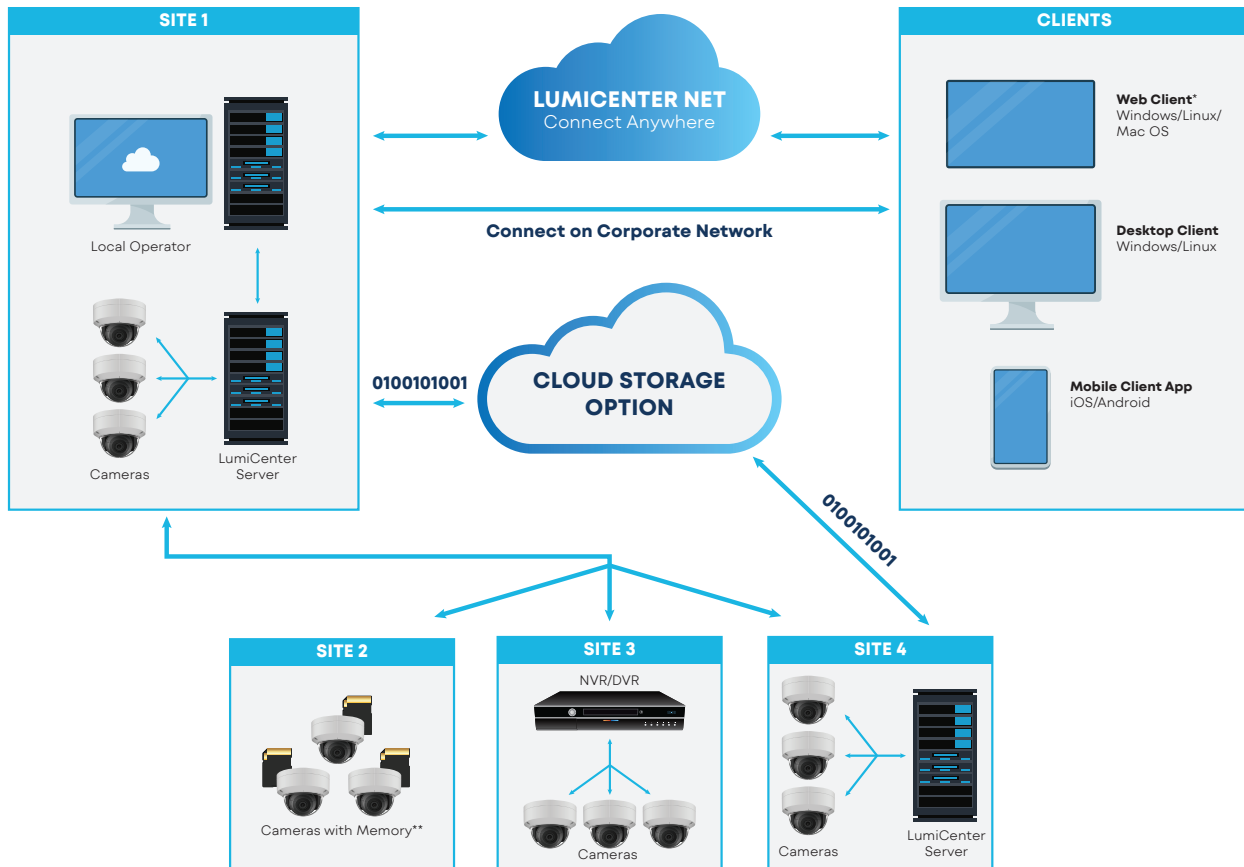


## LumiCenter Net

- ▶ Provides an intuitive, user-friendly web client without the need for port forwarding or an open network port.

# LumiCenter System Diagram

LumiCenter is designed to be an all-in-one integration and management hub for your surveillance and access control devices. It allows you to store data at the edge, locally, or in a centralized server. Access your systems and information no matter where you are or what device you are on with LumiCenter Net and our various clients.



## Key Features

- **Scalable** to suit any type and size of application.
- **ONVIF support** for compatibility with thousands of third-party IP cameras and devices.
- **Advanced AI-based video analytics** and embedded camera analytics.
- **LumiSearch** enables quick location of objects and individuals in recorded footage.
- **One-time license fee** with no annual maintenance.

\*Web Client requires HTML 5.x or later.

\*\*Camera edge storage adds another layer to video storage (optional).



LumiCenter VMS supports ONVIF profiles G, M, S and T for maximum IP camera and device compatibility. There are three variants of LumiCenter: Basic, Plus and Max. The software license has no annual maintenance fee.

## Choose the LumiCenter version that fits your needs.

Features	Basic	Plus	Max
Maximum Number of Distributed Servers	30	30	Unlimited
Maximum Number of Cameras	Unlimited	Unlimited	Unlimited
Real-Time Analytics (Object Tracker)	✓	✓	✓
Edge Analytics (Camera Metadata)	✓	✓	✓
Edge Storage (Playback Only)	✓	✓	✓
AutoStream™ Adaptive Bandwidth Management	✓	✓	✓
Interactive 3D Map	✓	✓	✓
Web Clients and Smart Phone Applications	✓	✓	✓
Timeslice Search (Search by Time Intervals)	✓	✓	✓
Macros (Event-Response Scenarios)	✓	✓	✓
ONVIF Profiles G, S, T, M	✓	✓	✓
Video Bookmarking (Searchable Text Comments)	✓	✓	✓
PanoMerge™	✓	✓	✓
LumiCenter Net (Cloud Service)	-	✓	✓
Reports	-	✓	✓
Cross-System Client	-	✓	✓
Storage Replication	-	✓	✓
Failover	-	-	✓
Video Wall	-	-	✓
LDAP Service	-	-	✓

## Add more power to your system with LumiCenter add-ons\*.

Feature	Basic	Plus	Max
Access Control**	✓	✓	✓
Face Recognition	-	✓	✓
LPR Search	-	✓	✓
LPR	-	✓	✓
LumiSearch™	-	✓	✓

\*Add-ons require a LumiCenter video license.

\*\*Access control add-on sold per reader.



**15245 Alton Parkway, Suite #100  
Irvine, CA 92618  
Ph: (949) 679-7777  
[www.luminyscorp.com](http://www.luminyscorp.com)  
[salesupport@luminyscorp.com](mailto:salesupport@luminyscorp.com)**

©2024 Luminys Systems Corporation. All rights reserved.  
LumiCenter, LumiSearch, PanoMerge, AutoStream are trademarks of Luminys Systems Corporation.  
All other marks belong to their respective owners.  
Product design and specifications are subject to change without notice.